

brownsboro farm gazette



Happy New Year to everybody.

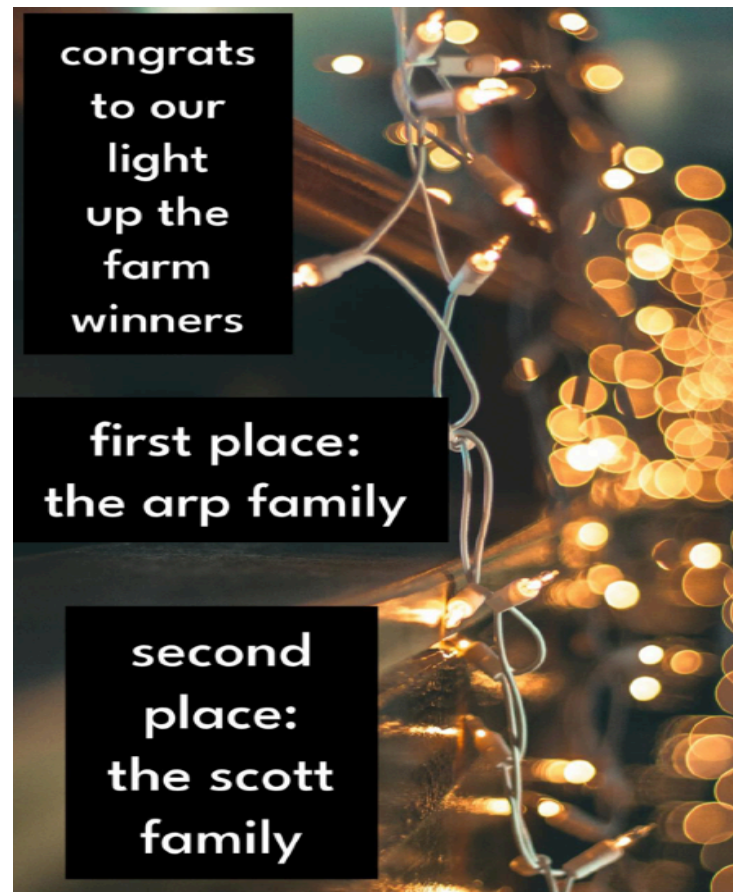
The city commission would like some input from our residents. The state legislature passed a bill that changes enforcement of zoning ordinances. All zoning ordinances are now controlled by Jefferson County. This means that when we see a violation of a zoning ordinance, we must go thru Jefferson County zoning for enforcement. While this takes away some of our control over our city, it also takes away the expense to Brownsboro Farms.

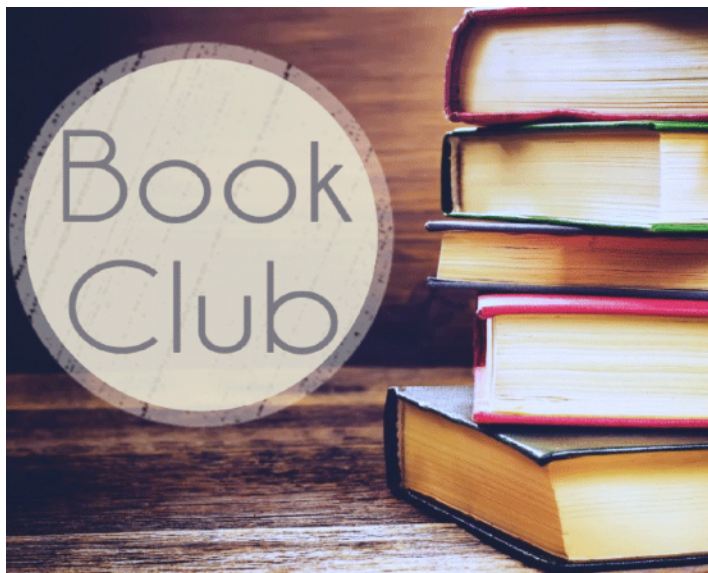
The exception to this bill is that we still control our roads. To enforce our parking ordinance, we have passed an ordinance that would set up a Code Enforcement Board, as required by law. This also requires the city to hire a Code Enforcement officer. This officer cannot be an elected official or employee of the city. Brownsboro Farm has used an outside company in the past for this purpose at a cost of \$300 per month. The question is, is it worth \$3,600 per year to our city to hire a company to, in essence, write parking violations. We do not think that the income from parking violations will cover the \$3,600 cost. This would be your tax dollars, so we would like your input. You can text me at **502-418-1846** or email me at jstout-bbf@outlook.com

Big THANK YOU to everyone who voted for 2025 Light up the Farm this year!

For the second year in a row the Arp family takes home first place with the most votes! Congrats to Carrie and Donovan at **3910 Ashridge Drive!**

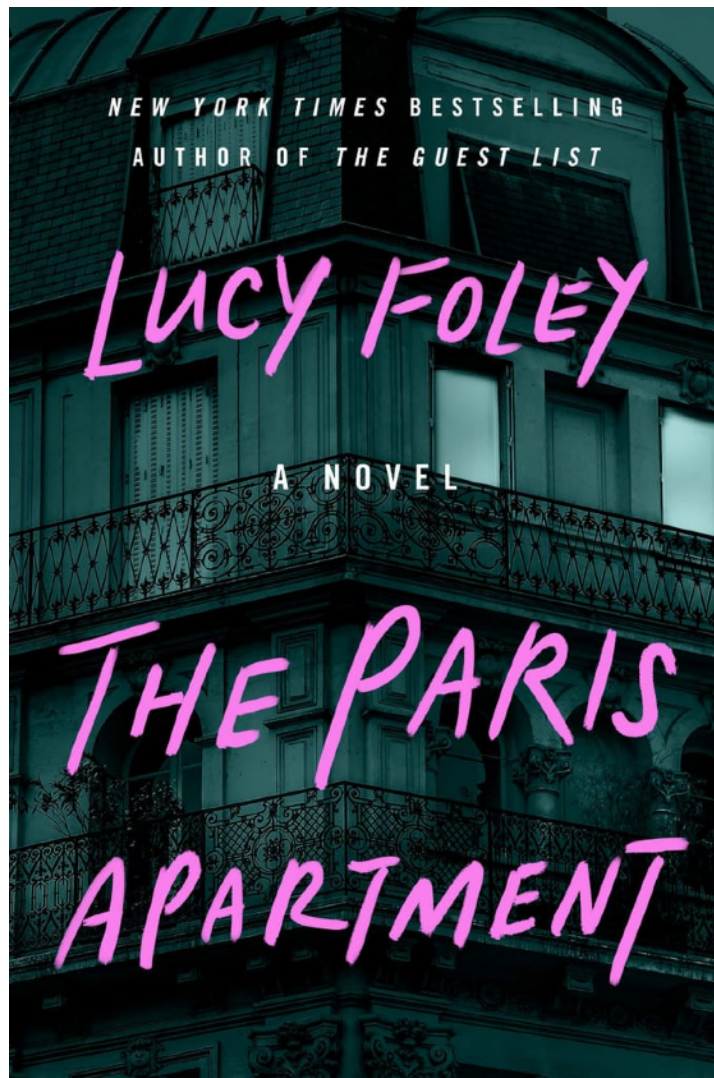
Second place goes to the Scott family with the second most votes! Congrats to Melody and Clark Scott at **3919 Ashridge Drive!** I will be getting your gift cards to you soon! Honorable mention to Clint and Tammy Smiley at **3607 Cascade** who got the third most votes! Go drive around and check out all the houses, so many look great! Happy Holidays Farm neighbors!





Next book CLUB
THE PARIS APARTMENT
By Lucy Foley

For More information, Contact:
Brenda Walker 502-418-2693
Meet at the Community Center!
New members welcome!
Tuesday January 20 @ 6:30



BBF Classified Page
BUY - SELL - TRADE - FREE

This is a Private page for the **residents of Brownsboro Farm** and is designed to help only the **residents of Brownsboro Farms** as a platform to list goods or services for sale, trade, or donate. Have outgrown baby items? Sports equipment collecting dust? That rocking chair nobody sits in? Child sitting services? Lawn equipment you don't use? Looking for lawn maintenance opportunity? Anything of value is welcome. Please list it or make a post searching for it here.

Questions???:

Contact Tom Utterback Jr.

[https://www.facebook.com/groups/](https://www.facebook.com/groups/6601435509907566/)

[6601435509907566/](https://www.facebook.com/groups/6601435509907566/)

collect moments, not things ♡♡

COMMUNITY CENTER / POOL MANAGER:
Brian Durbin
bpdurbo@gmail.com
502-220-2221



This QR code connects to a google form for clubhouse rental.

Or

<https://docs.google.com/forms/d/>

IMPORTANT THINGS FOR YOU TO DO!

Sign up - TODAY!!



As a friendly reminder and as new residents become a part of our wonderful City...don't forget to sign up for our online directory! Please follow these directions and don't skip steps...including the confirmation email which expires 2 hours after it's sent!! One person in the household can fill out for both! Don't do two entries for one home please.

) Go to this link:

<https://cityofbrownsborofarm.membershiptoolkit.com>

2) click Register/Login and then either create an account (or log in with a Membership Toolkit account if you have one with another organization - like a school).

3) You will be asked to verify your email and then log back in with your password and add your homeowner information which will build our directory and database.

Please note that when you create your account and receive the email to verify, that link expires within 2 hours.

4) Once you are a member and begin to fill out your info you can choose what will be shown online in the directory. (Kids names, pets, etc.)

5) Once you have completed your information you can then download the app if you would like for easier viewing of the directory. It's called Membership Toolkit and just easy to use as Facebook!



**Sign up for Reach Alert
Be Connected**

**Receive texts and notifications regarding the neighborhood.
Sign up is easy, click on the link and get started - today!!**

<https://app.reachalert.com/network-select>

Then, type in **Brownsboro Farm** and follow the prompts





Thank YOU to everyone who came out to see Santa and to our **organizers Jennifer, Serenity and Kelly!** We had a great turnout and raised over \$200 for Dare to Care!





Dinner club is a long standing tradition in Brownsboro Farm. Most groups meet on Saturday nights throughout the year and each resident or couple hosts one time throughout the year. You can have a theme, make a special cocktail, have it catered, host at a restaurant, do a progressive dinner...all kinds of options!

We will draw the groups at random on Saturday, **February 7th** at the **Lorenzen home!** If you plan on coming to the kick off, please **RSVP to Katie Danner**

at katiedanner@live.com or 502-494-9015

[https://www.facebook.com/groups/852627435273571#:~:text=Sign ups are live: https://form.jotform.com/253626783004053](https://www.facebook.com/groups/852627435273571#:~:text=Sign%20ups%20are%20live%3Ahttps://form.jotform.com/253626783004053)



Social Event Sign-up information will be coming your way in January!! **We are hoping to form a committee to assist organizing events.** Get on board and be involved in Brownsboro Farm Activities and events!!

- ✿ Dinner Club Kick off
- ✿ Food Truck Fridays
- ✿ Annual Egg Hunt - mid to late March
- ✿ Pool Opening Weekend Events - May long weekend
- ✿ 4th of July Festivities at the Pool
- ✿ Family Luau / Dive in Movie at the pool
- ✿ Teen Night at the Pool - July or August
- ✿ Closing Weekend at the Pool - Labor Day



January

2026



December							February						
S	M	T	W	T	F	S	S	M	T	W	T	F	S
	1	2	3	4	5	6	1	2	3	4	5	6	7
7	8	9	10	11	12	13	8	9	10	11	12	13	14
14	15	16	17	18	19	20	15	16	17	18	19	20	21
21	22	23	24	25	26	27	22	23	24	25	26	27	28
28	29	30	31										

SUNDAY	MONDAY	TUESDAY	WEDNESDAY	THURSDAY	FRIDAY	SATURDAY
28	29	30	31	1	2	3
				New Years Day	Recycle ♻️	
				JCPS - no school		
4	5	6	7	8	9	10
11	12	13	14	15	16	17
		Commissioners Meeting @ 7:30PM		Recycle ♻️		
18	19	20	21	22	23	24
	Martin Luther King Jr Day	Book Club @ 6:30PM				
	JCPS - no school					
25	26	27	28	29	30	31
				Recycle ♻️		



REGULARLY SCHEDULED DATES:

PARKS BOARD MEETING: WILL RESUME IN FEBRUARY
 COMMISSIONER'S MEETING: JANUARY 13 @ 6:30PM
 BOOK CLUB: JANUARY 20 @ 6:30PM

RECYCLING: EVERY OTHER WEEK ~ DENOTED BY ♻️

CITY CONTACTS:

Jimmy Stout, Mayor
Public Safety, Taxes, Audit, and Legislative research
Jstout-bbf@outlook.com
(502)418-1846

Brian Augustine, City Commissioner
Roads, Signage, Grounds maintenance
baugustine.bbf@gmail.com
(443)618-4708

Amanda Colpo, City Commissioner
Pool management/membership, Community Center, Swim Team Liaison
acolpo.bbf@gmail.com
(502) 500-9329

Katie Danner, City Commissioner
City website/Facebook page, Directory, Front sign, Parks Board Liaison, Social chair
katiedanner@live.com
(502)494-9015

Jennifer McIntyre, City Treasurer/Clerk
City Treasurer and Clerk Duties, Taxes
jmcintyre29@twc.com
(508)838-9332

Doug Walker, City Commissioner
Sanitation, Utilities, Snow Removal
doug.walker0802@gmail.com
(502)235-6699

SERVICES:

POLICE:
Non emergencies (502)548-2599 / (502)574-2111
Emergencies: call 911

COMMUNITY CENTER / POOL MANAGER:
Brian Durbin
bpdurbo@gmail.com
(502)220-2221

GAZETTE:
Helen Glish
BROWNSBOROFARMGAZETTE@GMAIL.COM
(502)298-1773

CITY WEBSITE:
[HTTPS://BROWNSBOROFARM.ORG](https://BROWNSBOROFARM.ORG)



What is it called when a snowman has a temper tantrum?
A MELTDOWN



Art & Cartoons by Whitney Potter

The Brownsboro Farm Gazette is an effective mode of advertising to reach your neighbors for sharing goods and services, celebrating birthdays...



ADVERTISING PRICES:

- BUSINESS CARD: \$20
- 1/4 PAGE: \$30
- 1/3 PAGE: \$40
- 1/2 PAGE: \$50
- 3/4 PAGE: \$60
- FULL PAGE: \$75



- BITTER
- BLIZZARD
- CALENDAR
- CELEBRATION
- FIREPLACE
- FREEZING
- FROST
- FROSTY
- HIBERNATION
- HOLIDAY
- HOT CHOCOLATE
- ICICLE
- INDOOR
- JANUARY
- MITTENS
- MLK DAY
- NEW YEAR
- PARKA
- POLAR
- RESOLUTION
- SCARF
- SKIING
- SLEDDING
- SNOWFLAKE
- SNOWMAN
- SWEATER
- WINTER

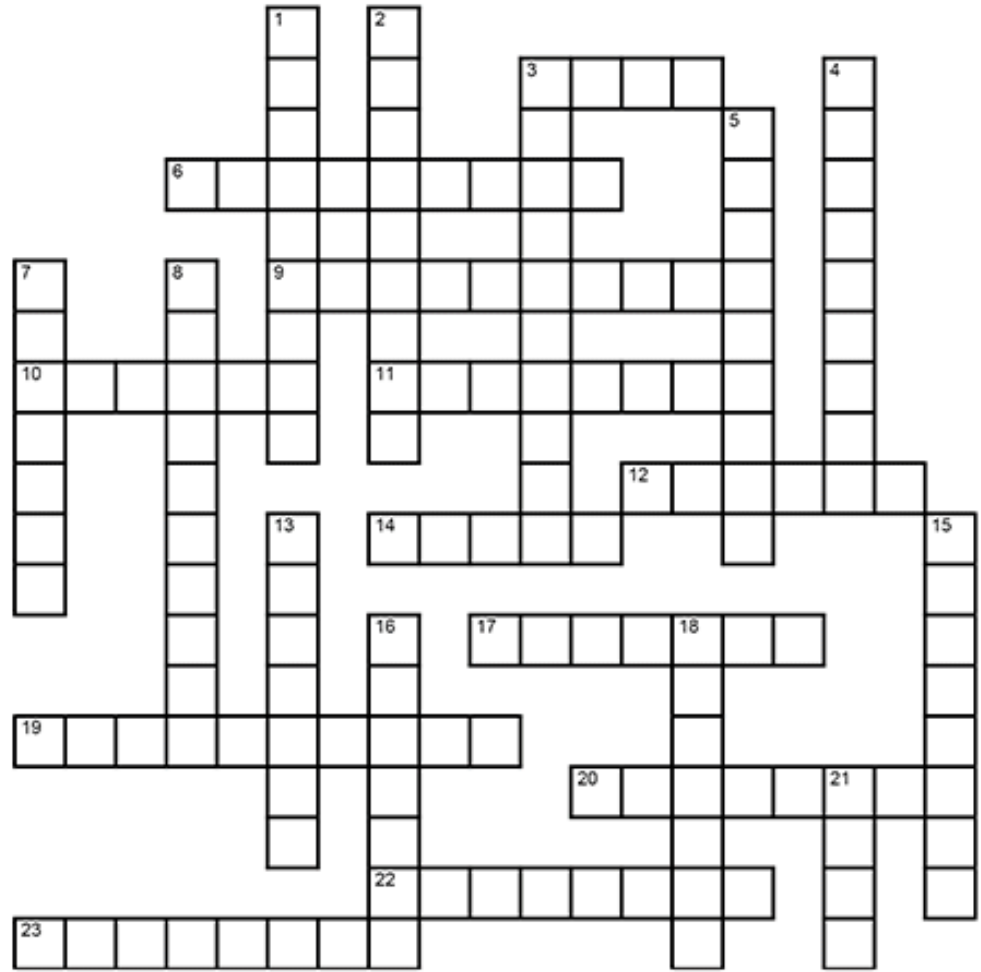
WORD SEARCH DIRECTIONS: Find and circle the vocabulary words in the grid. Look for them in all directions including backwards and diagonally.

P	E	R	S	O	Y	V	S	W	F	M	X	P	I	Y	X	L	Y	J
M	T	S	Y	U	L	M	F	G	E	L	L	R	R	B	P	A	P	T
E	C	A	L	P	E	R	I	F	N	W	I	N	T	E	R	J	A	G
A	R	L	H	X	Q	G	D	F	O	I	M	V	Z	U	A	Q	G	Y
P	G	Q	J	O	N	C	Y	X	U	Q	Z	E	F	N	Q	N	T	Q
I	A	Z	C	S	L	A	P	A	R	K	A	E	U	D	I	S	D	R
W	R	Z	C	W	D	I	B	L	G	X	X	A	E	D	O	N	I	A
X	L	A	N	K	O	P	D	Q	W	L	R	A	D	R	E	O	J	D
Q	R	K	L	A	S	W	I	A	J	Y	O	E	F	W	F	I	M	N
F	E	M	X	O	R	D	D	J	Y	L	L	S	Y	G	R	T	I	E
N	F	I	J	E	P	Z	R	W	H	S	R	E	L	P	O	A	T	L
A	E	C	B	E	M	H	A	T	Q	N	A	O	Q	E	S	N	T	A
M	C	I	P	L	C	O	Z	B	A	R	O	E	O	C	T	R	E	C
W	Y	C	M	V	W	H	Z	R	B	M	Z	G	V	D	B	E	N	D
O	B	L	H	X	N	O	I	T	U	L	O	S	E	R	N	B	S	Q
N	X	E	G	J	J	R	L	C	E	L	E	B	R	A	T	I	O	N
S	W	E	A	T	E	R	B	I	T	T	E	R	W	R	W	H	E	X
H	O	T	C	H	O	C	O	L	A	T	E	O	R	Z	K	W	A	C
G	N	I	I	K	S	Y	Q	K	E	K	A	L	F	W	O	N	S	A



ACROSS

- 3. Wintry precipitation common in January
- 6. January's birth flower
- 9. Restlessness from staying indoors
- 10. Season in full swing during January
- 11. Zodiac sign for late January birthdays
- 12. January's birthstone
- 14. Icy coating on January mornings
- 17. Frosty figure built after fresh snowfall
- 19. Wintertime activity on frozen ponds
- 20. Comforting chocolate drink for cold days
- 22. Christian feast day on January 6th
- 23. Cozy coverings for chilly nights



DOWN

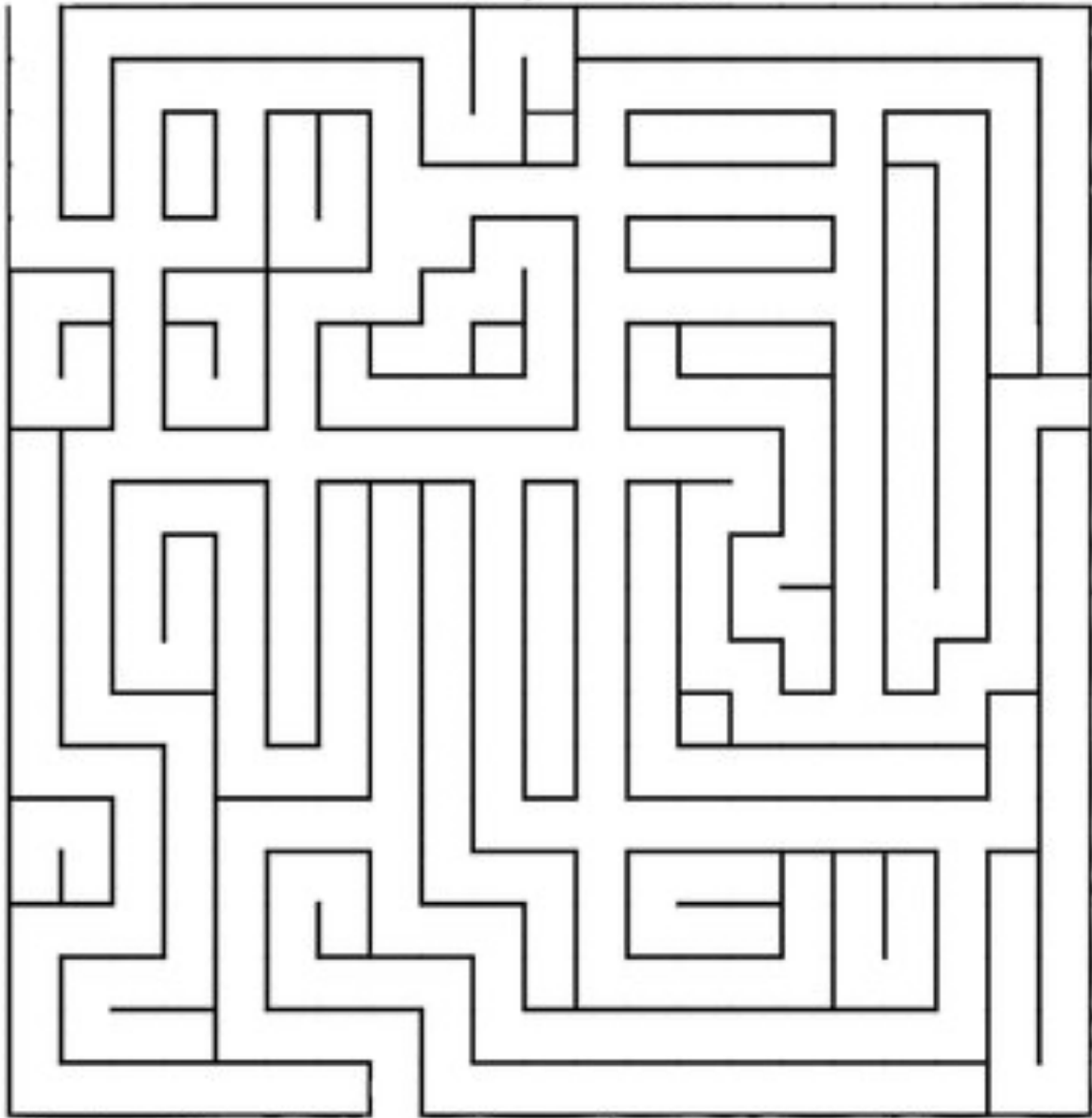
- 1. Zodiac sign for early January birthdays
- 2. Arctic mammal taking January swims
- 3. Unique ice crystals falling from winter skies
- 4. Cozy spot for gathering on cold evenings
- 5. Popular destination for winter sports enthusiasts
- 7. January 1st celebration

- 8. Winter plunge for warm relaxation
- 13. First month of the new year
- 15. Severe January snowstorm
- 16. Frozen water droplets hanging from roofs
- 18. Hand warmers for snowy days
- 21. Typical January weather condition

Aquarius	Hot Springs
Blankets	Ice Skating
Blizzard	Icicles
Cabin Fever	January
Capricorn	Mittens
Carnation	New Year
Cold	Polar Bear
Epiphany	Ski Resort
Fireplace	Snow
Frost	Snowflakes
Garnet	Snowman
Hot Cocoa	Winter

January Maze

↓ January



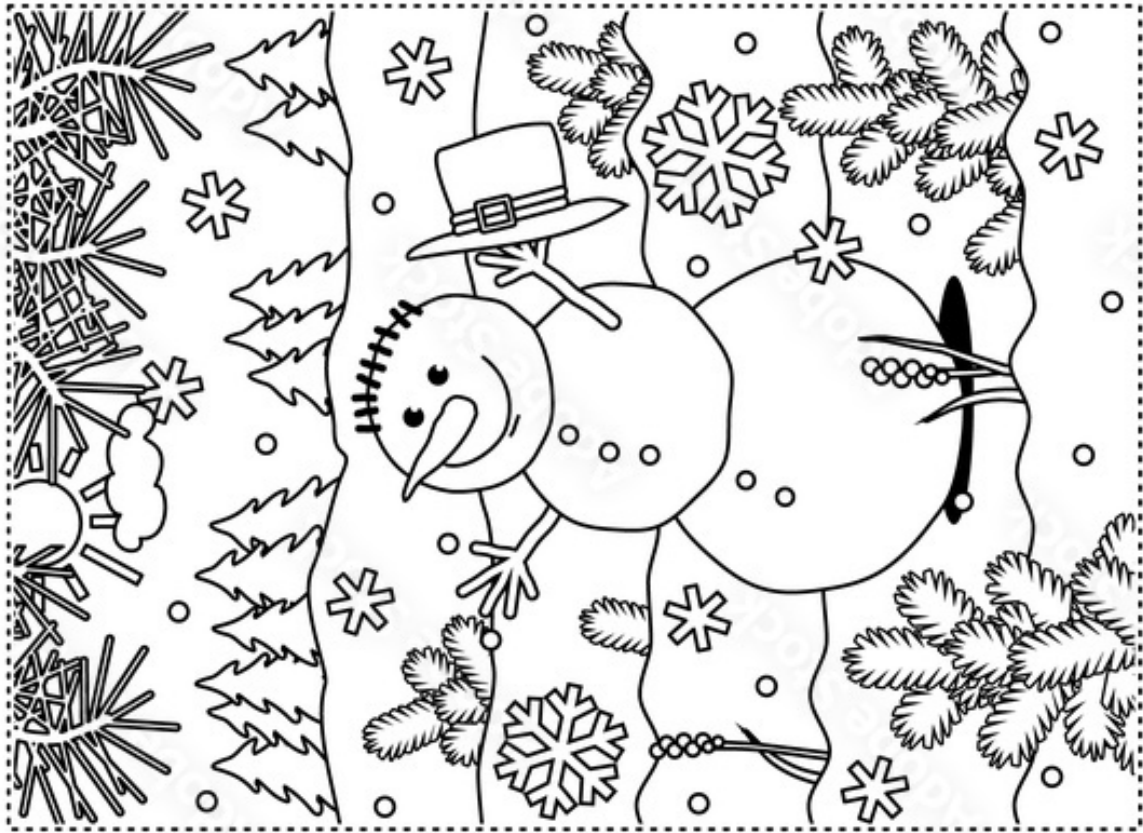
DIFFERENCES

Find 10 differences.



more printables on www.myhomeschoolmath.com

Find the ten differences between the two pictures.



New Year I Spy & Color

How many of each New Year item can you find? Write the number on the line. Color the pictures.

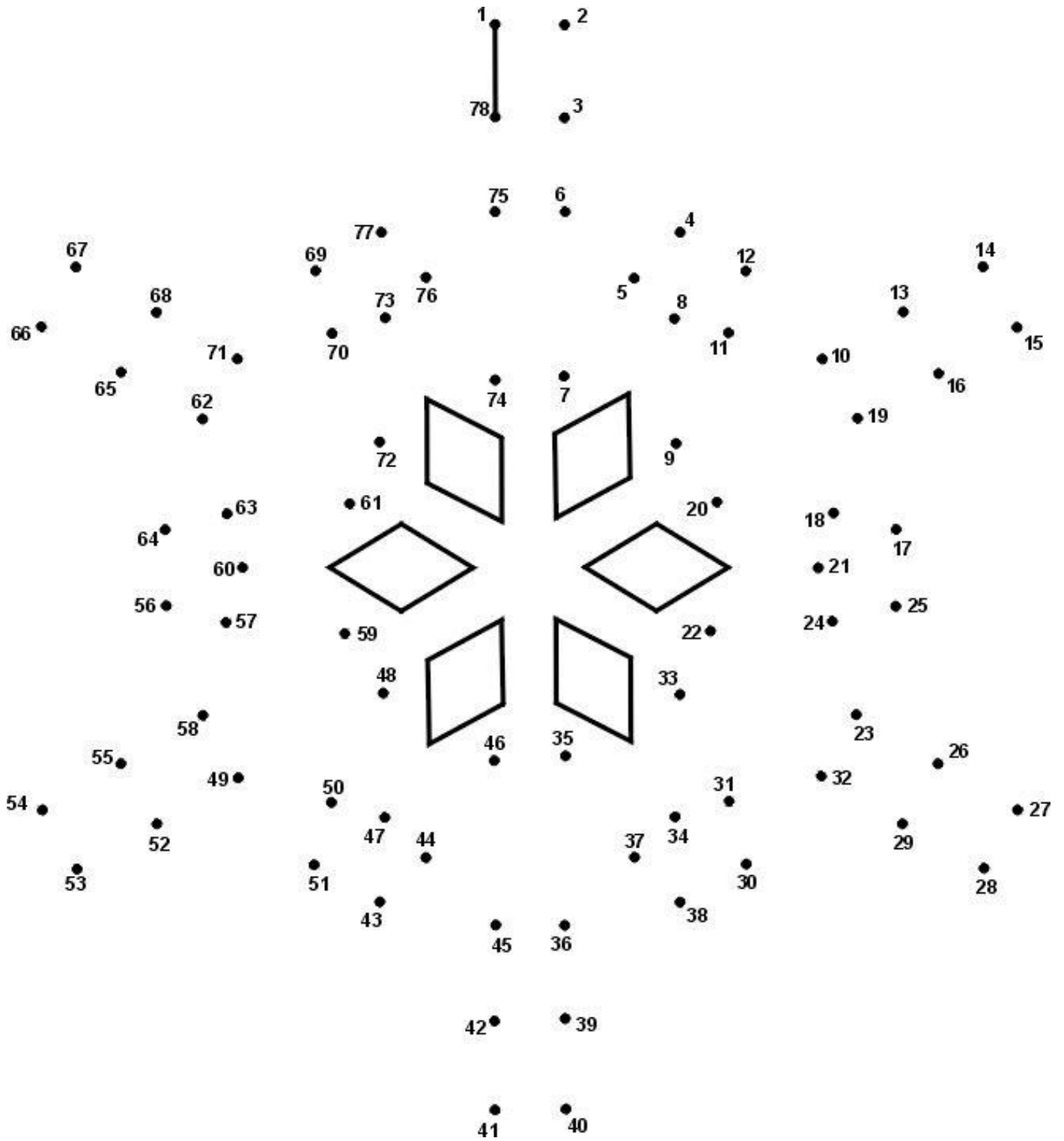
The grid contains the following items for counting:

- Fireworks: 10
- Balloons: 10
- Calendar (01JAN): 8
- Party Hat: 10
- Starburst: 10
- New Years sign: 8
- Cake: 8
- Rocket: 8

Counting lines on the right:

- _____
- _____
- _____
- _____
- _____
- _____
- _____
- _____
- _____
- _____

LovingHomeschool.com (c) 2022



Hello January

Can you find the words by using the key below?



1.

2.

3.

4.

5.

6.

7.

8.

9.

10.

11.

12.

13.

LetsDoPuzzles.com - For personal use only

